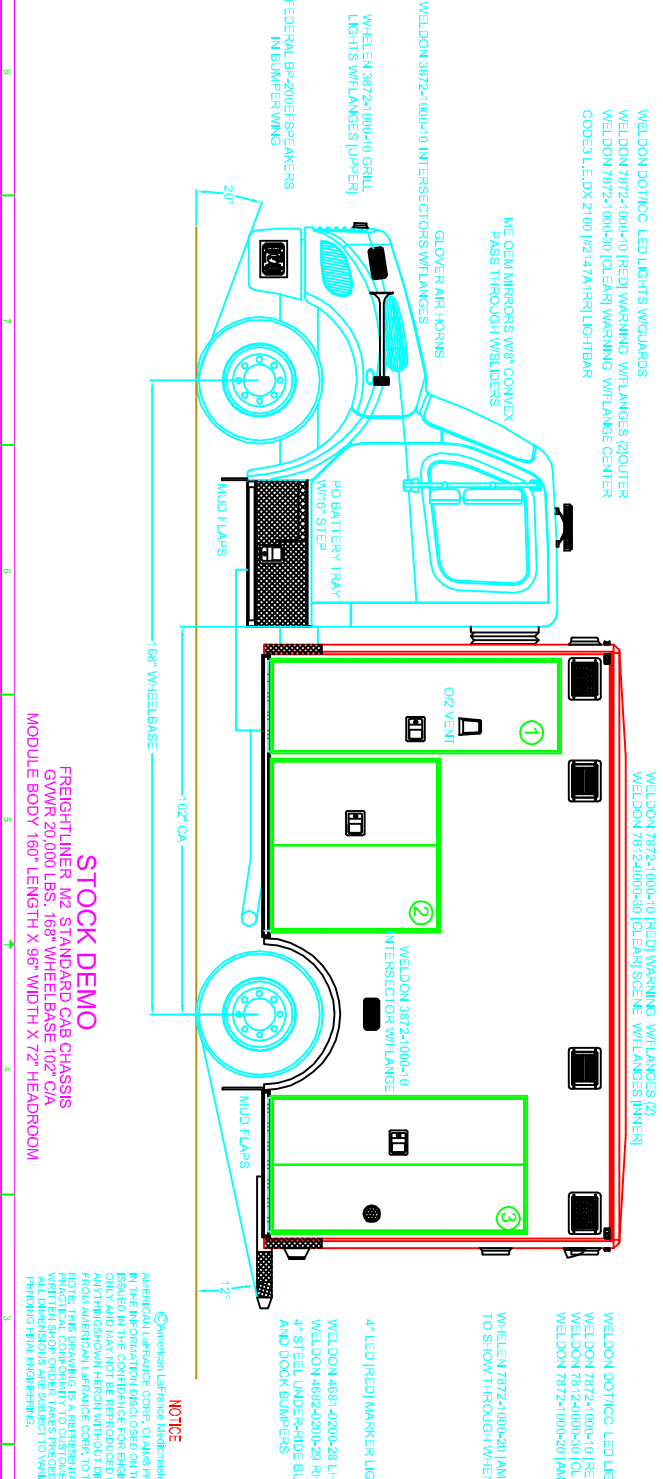
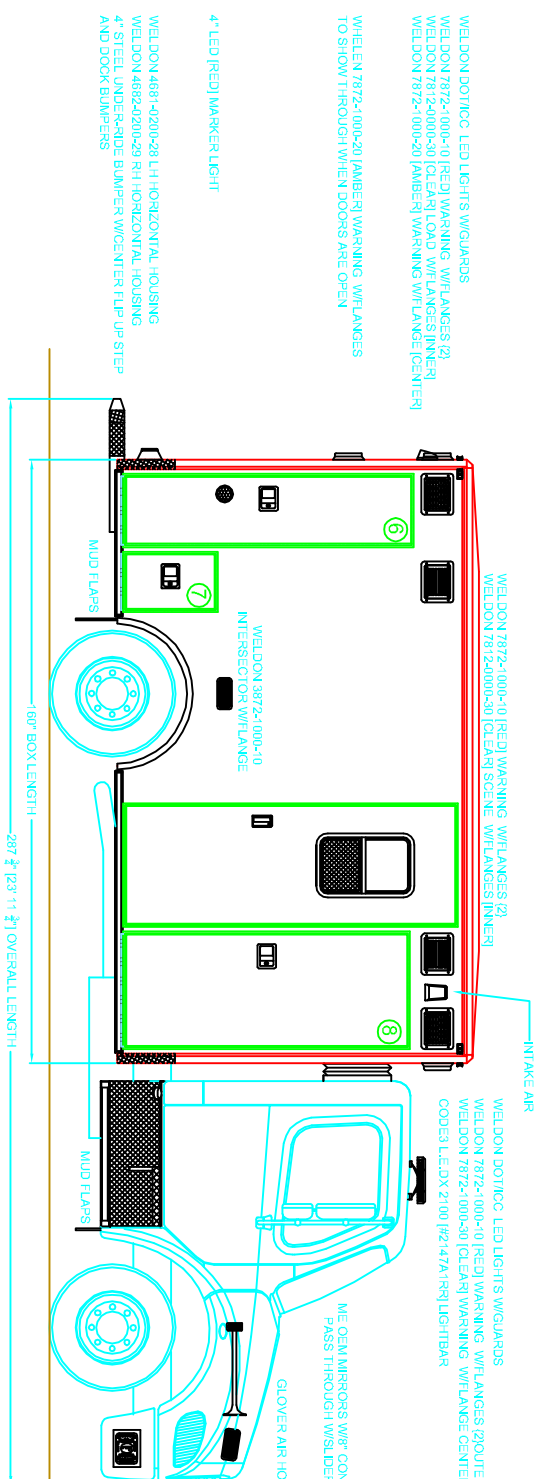


REQ	DESCRIPTION	DATE	CODE BY

EXTERIOR COMPARTMENTS DIMENSIONS (IN)			
COMP	HEIGHT	WIDTH	DEPTH
41	77	54	22.94
42	44	45	22.94
43	86	35.02	22.94
44	77	19.04	22.94
45	25	14.79	22.94
46	75	30	22.94x117



**PRELIMINARY 05/12/2004**

**STOCK DEMO**

**NOTICE**

AMERICAN LaFRANCE CORP. CLAIMS PROPRIETARY RIGHTS ISSUED IN THE CONFIDENCE FOR ENGINEERING INFORMATION ONLY AND MAY NOT BE REPRODUCED OR USED TO MANUFACTURE ANYTHING SHOW PERSON WITHOUT DIRECT WRITTEN PERMISSION FROM THE COMPANY. THE COMPANY IS NOT RESPONSIBLE FOR THE PRACTICAL APPLICATIONS OF THIS INFORMATION. THE COMPANY IS NOT RESPONSIBLE FOR ANY DAMAGES ARISING FROM THE USE OF THIS INFORMATION. THE COMPANY IS NOT RESPONSIBLE FOR ANY DAMAGES ARISING FROM THE USE OF THIS INFORMATION.

**AMERICAN LaFRANCE**  
**Medicmaster**

3705 SUDON PKWY SANFORD FLORIDA 32771  
 PHONE: 407-326-9571 FAX: 407-326-9571

WIDGER 05/11/04 11'6" x 7' 1/2" x 7' 1/2"

QURBSIDE & STREETSIDE EXTERIOR

6340019 0326/04 B-602 12-2004

8 7 6 5 4 3 2 1

A B C D

**STOCK DEMO**  
 FREIGHTLINER M2 STANDARD CAB CHASSIS  
 GVWR 20,000 LBS., 168" WHEELBASE 102" CA  
 MODULE BODY 160" LENGTH X 96" WIDTH X 72" HEADROOM